

## Natural changes of population 1961 – 2022

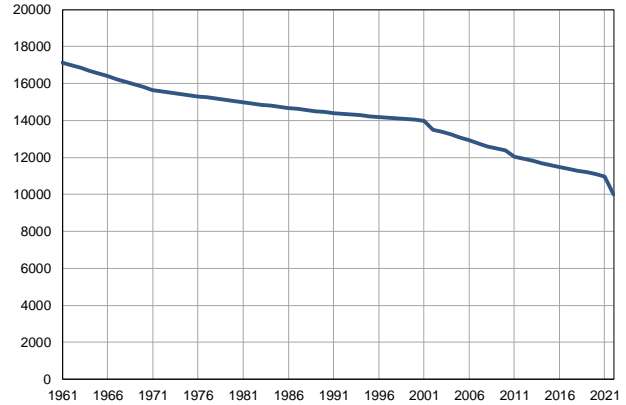
Profile  
July 2023

### Mali Idoš

	1961	2022
Population size	17144	10000
Livebirths, Number	291	83
Deaths, Number	179	174
Natural increase, Number	112	-91
Infants deaths, Number	11	0
Livebirths, per 1,000 population	17	8
Deaths, per 1,000 population	10	17
Natural increase, per 1,000 population	7	-9
Infants deaths, per 1,000 livebirths	38	0

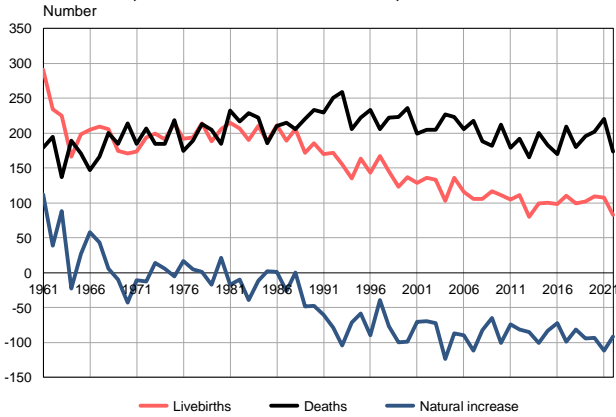
Source: Vital Statistics, SORS

Population size, 1961–2022



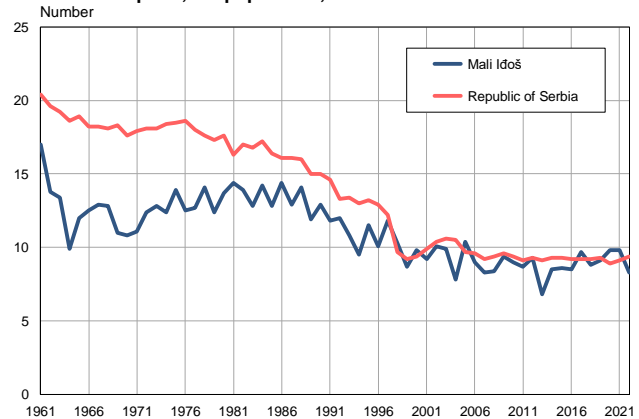
Source: Vital Statistics, SORS

Livebirths, deaths and natural increase, 1961–2022



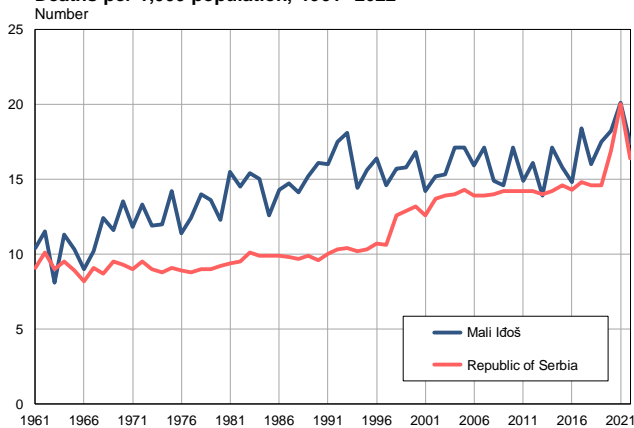
Source: Vital Statistics, SORS

Livebirths per 1,000 population, 1961–2022



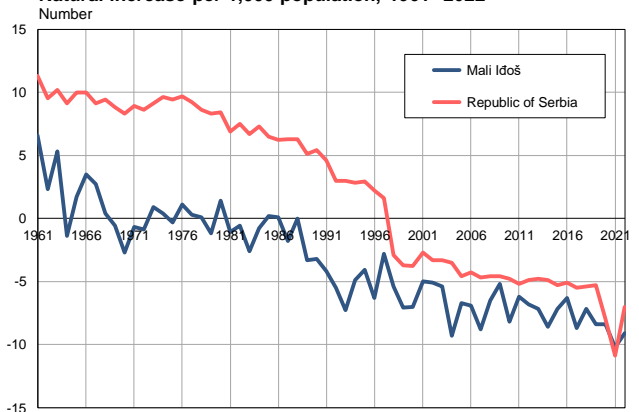
Source: Vital Statistics, SORS

Deaths per 1,000 population, 1961–2022



Source: Vital Statistics, SORS

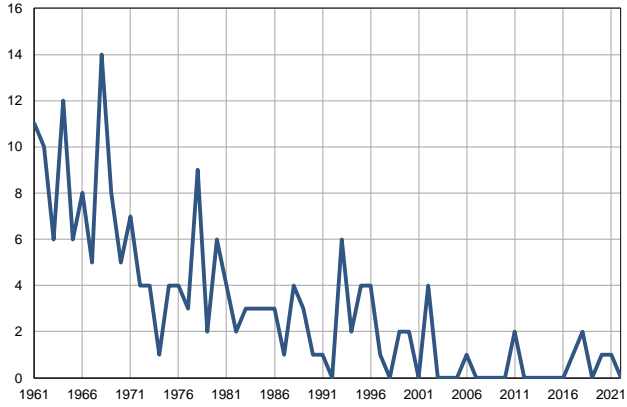
Natural increase per 1,000 population, 1961–2022



Source: Vital Statistics, SORS

**Infants deaths, 1961–2022**

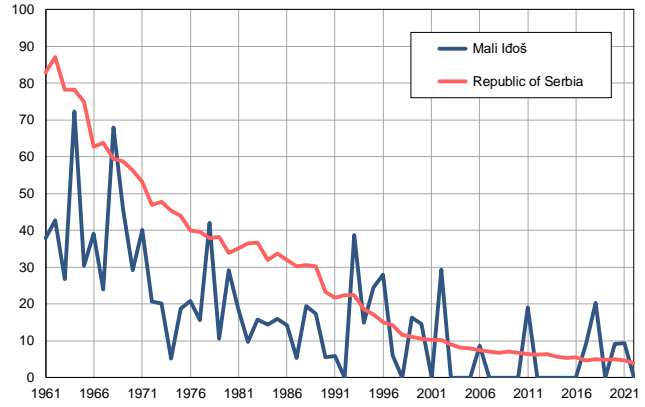
Number



Source: Vital Statistics, SORS

**Infants deaths per 1,000 livebirths, 1961–2022**

Number



Source: Vital Statistics, SORS

**Table. Natural changes of population, Mali lđoš**

Year	Number of population	Livebirths	Deaths	Natural increase	Infants deaths	per 1000 population			Infant deaths per 1000 livebirths
						Livebirths	Deaths	Natural increase	
1961	17144	291	179	112	11	17.0	10.4	6.6	37.8
1962	16995	234	195	39	10	13.8	11.5	2.3	42.7
1963	16845	225	137	88	6	13.4	8.1	5.3	26.7
1964	16696	166	189	-23	12	9.9	11.3	-1.4	72.3
1965	16547	198	171	27	6	12.0	10.3	1.7	30.3
1966	16398	205	147	58	8	12.5	9.0	3.5	39.0
1967	16248	209	166	43	5	12.9	10.2	2.7	23.9
1968	16099	206	200	6	14	12.8	12.4	0.4	68.0
1969	15950	175	185	-10	8	11.0	11.6	-0.6	45.7
1970	15800	171	214	-43	5	10.8	13.5	-2.7	29.2
1971	15651	174	185	-11	7	11.1	11.8	-0.7	40.2
1972	15584	194	207	-13	4	12.4	13.3	-0.9	20.6
1973	15516	199	185	14	4	12.8	11.9	0.9	20.1
1974	15449	191	185	6	1	12.4	12.0	0.4	5.2
1975	15381	214	219	-5	4	13.9	14.2	-0.3	18.7
1976	15313	192	175	17	4	12.5	11.4	1.1	20.8
1977	15245	194	189	5	3	12.7	12.4	0.3	15.5
1978	15178	214	213	1	9	14.1	14.0	0.1	42.1
1979	15110	188	205	-17	2	12.4	13.6	-1.2	10.6
1980	15043	206	185	21	6	13.7	12.3	1.4	29.1
1981	14975	215	232	-17	4	14.4	15.5	-1.1	18.6
1982	14917	207	217	-10	2	13.9	14.5	-0.6	9.7
1983	14859	190	229	-39	3	12.8	15.4	-2.6	15.8
1984	14801	210	222	-12	3	14.2	15.0	-0.8	14.3
1985	14742	188	186	2	3	12.8	12.6	0.2	16.0
1986	14685	211	210	1	3	14.4	14.3	0.1	14.2
1987	14626	189	215	-26	1	12.9	14.7	-1.8	5.3
1988	14568	206	206	0	4	14.1	14.1	0.0	19.4
1989	14510	172	220	-48	3	11.9	15.2	-3.3	17.4
1990	14452	186	233	-47	1	12.9	16.1	-3.2	5.4
1991	14394	170	230	-60	1	11.8	16.0	-4.2	5.9
1992	14354	172	251	-79	0	12.0	17.5	-5.5	0.0
1993	14315	155	259	-104	6	10.8	18.1	-7.3	38.7
1994	14275	135	206	-71	2	9.5	14.4	-4.9	14.8
1995	14236	164	222	-58	4	11.5	15.6	-4.1	24.4
1996	14196	143	233	-90	4	10.1	16.4	-6.3	28.0
1997	14156	167	206	-39	1	11.8	14.6	-2.8	6.0
1998	14116	145	222	-77	0	10.3	15.7	-5.4	0.0
1999	14076	123	223	-100	2	8.7	15.8	-7.1	16.3
2000	14036	137	236	-99	2	9.8	16.8	-7.0	14.6
2001	13997	129	199	-70	0	9.2	14.2	-5.0	0.0
2002	13491	136	205	-69	4	10.1	15.2	-5.1	29.4
2003	13402	133	205	-72	0	9.9	15.3	-5.4	0.0
2004	13238	103	227	-124	0	7.8	17.1	-9.3	0.0
2005	13073	136	223	-87	0	10.4	17.1	-6.7	0.0

**Table. Natural changes of population, Mali lđoš**

Year	Number of population	Livebirths	Deaths	Natural increase	Infants deaths	per 1000 population			Infant deaths per 1000 livebirths
						Livebirths	Deaths	Natural increase	
2006	12943	116	206	-90	1	9.0	15.9	-6.9	8.6
2007	12770	106	218	-112	0	8.3	17.1	-8.8	0.0
2008	12585	106	188	-82	0	8.4	14.9	-6.5	0.0
2009	12479	117	182	-65	0	9.4	14.6	-5.2	0.0
2010	12389	111	212	-101	0	9.0	17.1	-8.2	0.0
2011	12027	105	179	-74	2	8.7	14.9	-6.2	19.0
2012	11947	111	192	-81	0	9.3	16.1	-6.8	0.0
2013	11844	80	165	-85	0	6.8	13.9	-7.2	0.0
2014	11705	99	200	-101	0	8.5	17.1	-8.6	0.0
2015	11575	100	183	-83	0	8.6	15.8	-7.2	0.0
2016	11486	98	170	-72	0	8.5	14.8	-6.3	0.0
2017	11386	110	209	-99	1	9.7	18.4	-8.7	9.1
2018	11280	99	180	-81	2	8.8	16.0	-7.2	20.2
2019	11191	102	196	-94	0	9.1	17.5	-8.4	0.0
2020	11087	109	202	-93	1	9.8	18.2	-8.4	9.2
2021	10972	108	220	-112	1	9.8	20.1	-10.2	9.3
2022	10000	83	174	-91	0	8.3	17.4	-9.1	0.0

Source: Vital Statistics, SORS

## Definitions

### Population size

Number of population in the respective year. The data on the number of population in 1961, 1971, 1981 and 1991 are census data, while for the inter-census years the number of population was calculated as an average inter-census difference. From 2002 are given the population estimates that were calculated according to the census of population results and the annual statistics of natural mechanical population movements.

### Livebirths

Absolute number of live births in the course of a year. Live born child means a child giving vital signs after birth (breathing, i.e. heartbeat), even for the shortest time, regardless the mother's pregnancy duration.

### Deaths

Absolute number of deaths in the course of a year. Deceased is a person that whenever after having been born live, shows permanently stopped vital signs.

### Natural increase

Natural population increase is the number of live births minus the number of deaths.

### Infants deaths

Absolute number of infants deaths in the course of a year. Deceased infant is a child that after having been born live and before aged one year, shows permanently stopped vital signs.

### Livebirths, per 1 000 population

Livebirths rate is the ratio of the number of live births and the population size in the respective year. The number of live births is divided by the population size and then multiplied by 1000.

### Deaths, per 1 000 population

General mortality rate represents the ratio between the number of deaths and the population size in the respective year. The number of deaths is divided by population size and then multiplied by 1000.

### Natural increase, per 1 000 population

Natural population increase rate is the difference between the number of live births and the number of deaths, in relation to the population size in the respective year.

Natural population increase rate = (number of live births - number of deaths) / population size \* 1000

### Infants deaths, per 1 000 livebirths

Infant mortality rate is the ratio of deceased children under 1 year of age and live births in the respective year. The mortality rate is expressed per 1000 live births.

Infant mortality rate = (number of deceased children under 1 year of age / number of live births) \* 1000

## Additional info:



Download all database data in Excel format:

[Data](#)



DevInfo profiles:

[devinfo.stat.gov.rs/SerbiaProfileLauncher/?lang=en](http://devinfo.stat.gov.rs/SerbiaProfileLauncher/?lang=en)



DevInfo online database:

[devinfo.stat.gov.rs/vitalna](http://devinfo.stat.gov.rs/vitalna)



For additional information or questions please contact:

[devinfo@stat.gov.rs](mailto:devinfo@stat.gov.rs)